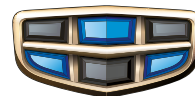


CRAFTED BY PASSION

THE ALL-NEW GEELY MONJARO



GEELY



MONARO

SYMPHONY OF ARTISTRY AND TECHNOLOGY

The new Geely Monjaro is an innovation in design and a marvel of technology.





EXTERIOR

WITH ITS CLEAN AND PRECISE FEATURES, THE LUXURIOUSLY DESIGNED MONJARO IS A COMMANDING PRESENCE ON THE ROAD.

EXTERIOR COLORS

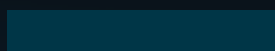
The new Geely Monjaro is available in an array of striking colors.



MARS RED



MARBLE BLACK



CRYSTAL TURQUOISE



AURORA SILVER



STORM GRAY



PEARL WHITE



“INTERSTELLAR TRAVEL” WAISTLINE

The luxuriously streamlined design generates passion that is undeniably singular, evoking a waistline that runs through and shapes the body's silhouette, almost like the imprint left after an interstellar journey.



"MILKY WAY SURGE" FRONT FACE

A surge is a dynamic state in which material constantly emerges and is full of power. The front view, with its "Milky Way Surge" look, implies a constant emergence of energy, setting off the tide of the universe. It flows as an embodiment of the symphony of time and space.



"AURORA MATRIX"

FULL-WIDTH HORIZONTAL TAILLIGHTS

Every spot in the taillights sparkles with a cosmic aurora, and countless light spots are connected in an array, releasing infinite energy.



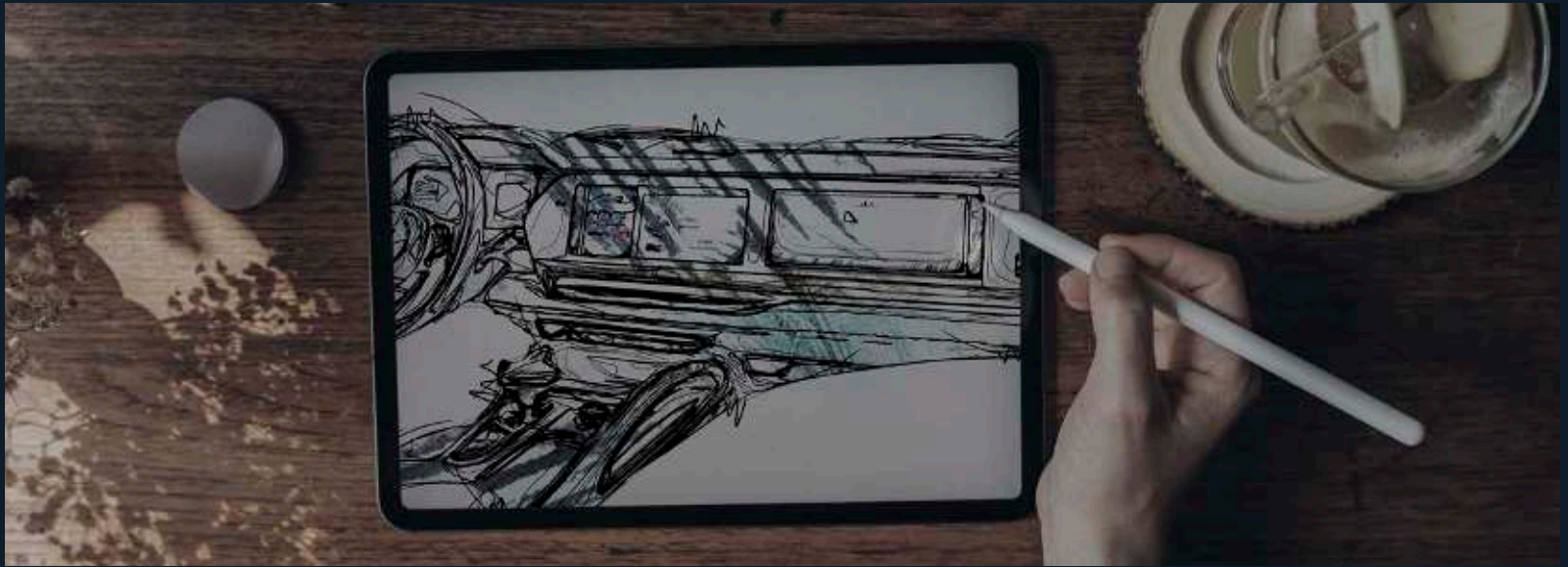
Rear-crossing pulse matrix taillamp



Streamlined design

A PANORAMIC VIEW





INTERIOR

THE ELEGANTLY DESIGNED MONJARO INTERIOR COMES IN A CHOICE OF COLORS THAT COMBINE TRADITIONAL INSPIRATIONS WITH ELEMENTS FROM NATURE.



INTERIOR COLORS

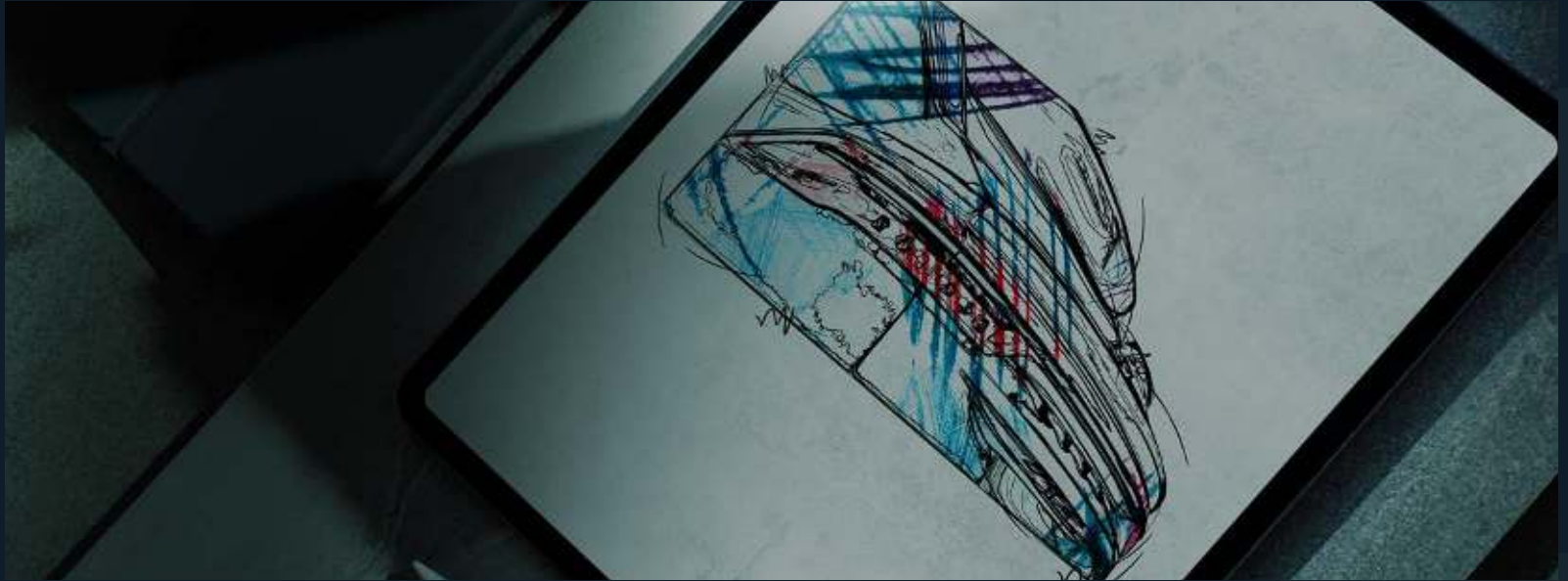
Elegance is a given with the choice of interior colors.



BESPOKE "CRYSTAL TURQUOISE"

Continuing the theme of combining tradition and nature, the Crystal Turquoise color is inspired by the green of mountains, combining traditional porcelain with natural emerald.





LUXURY FEATURES

A MULTITUDE OF TINY DETAILS CREATE THE PICTURE.
THE LUXURIOUS DETAILS OF THE MONJARO ARE WHAT
MAKE IT SO DISTINCTIVE.

CMA - WORLD-CLASS MODULAR ARCHITECTURE



WORLD-CLASS CMA WITH

First-class Engine: High-power 2.0TD+8AT high-performance powertrain, high-power 2.0TD engine = 350 N·m 235HP, 0-100 KM/H: 7.7 S.

Transmission: High-quality Aisin 8AT transmission featuring excellent energy-saving performance and maintenance-free life span.

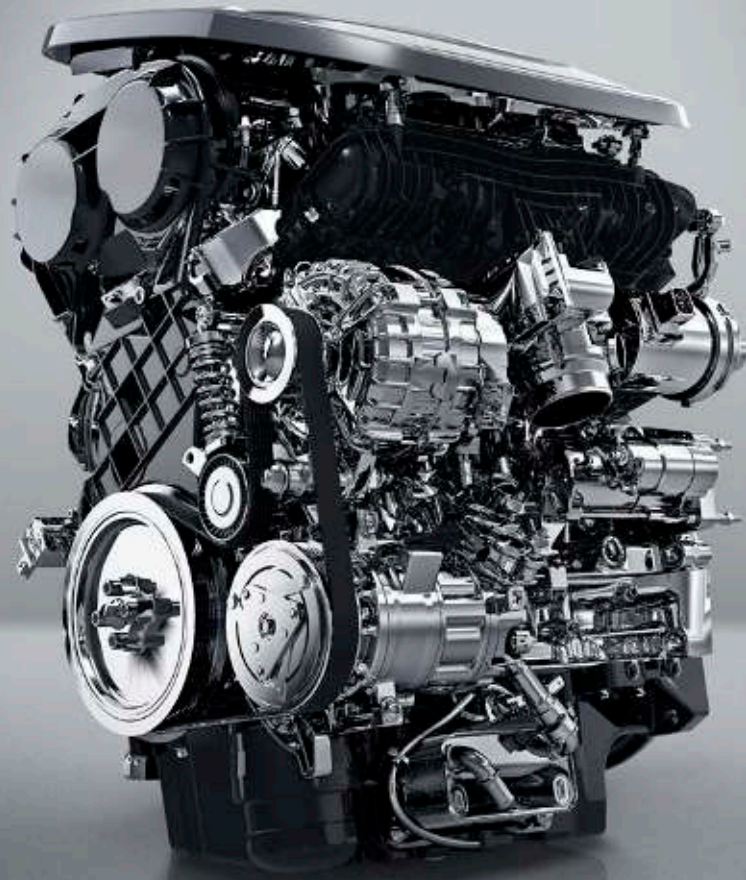
In addition to CMA, 2.0TD engine and Aisin 8AT transmission, the Monjaro is also equipped with the latest BorgWarner Intelligent 4WD System (Sixth Generation).



High-quality Aisin 8AT transmission featuring excellent energy-saving performance



Highly scalable compact modular architecture (CMA)



**WTCR World Champion-class
Drive E 2.0TD Engine**

ENVIRONMENTALLY-FRIENDLY SUEDE

The Monjaro is equipped with eco-friendly suede, which is delicate to the touch, non-toxic and odorless, offering you a high-quality luxury cabin.



BOSE Bespoke Active Noise Cancellation (ANC) Audio



Three Temperature Zone Fully-Automatic Health Air Conditioner

FULLY-FITTED ZERO PRESSURE MULTI-FUNCTIONAL SEAT

The multi-functional seats feature comprehensive and user-friendly functions, including:

- 12-way power adjustment to meet different driving preferences and needs
- Ventilated seats so no discomfort in summer
- Position memory for exclusive enjoyment
- Welcoming function, which makes climbing in and out more comfortable



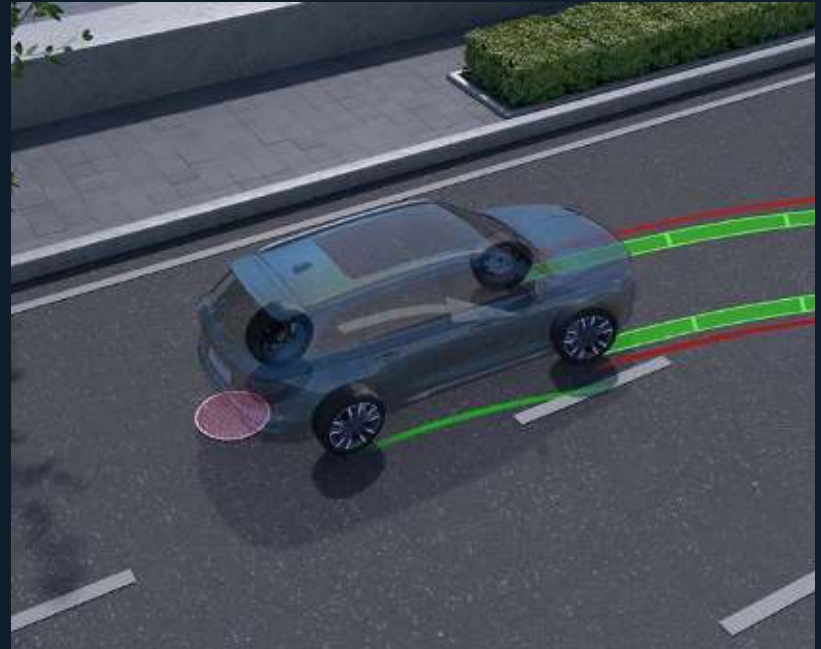
TECHNOLOGY

540° TRANSPARENT CHASSIS

Because 360° isn't enough, the Monjaro's 540° camera for thorough chassis coverage is preferable. It helps see complex conditions underneath the chassis for added confidence in tricky driving situations.



Head-up Display

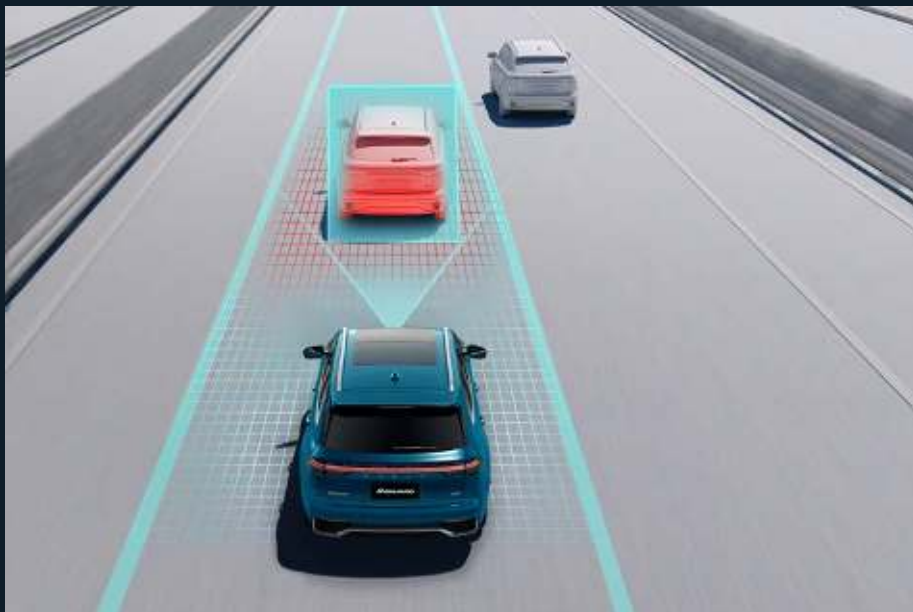


540° transparent chassis



THREE INDEPENDENT HIGH-DEFINITION LARGE SCREENS

The Monjaro is not limited to the traditional 12.3-inch center screen, but a deluxe screen with a wide view measuring 1 meter in length.



HIGHWAY ASSIST SYSTEM

- Correcting unintentional lane crossing
- Avoiding straying from lanes at high speed
- Reassuring long-distance driving on highway
- Following the car in front from stationary state (0 km/h)

SAFETY

HIGH-STRENGTH CAGE BODY

With its CMA architecture, the Monjaro has 78.94% high steel ratio in the body, which offers 5.2 times resistance to roof crushing.



INTELLIGENT AVOIDANCE OF LARGE VEHICLES

When overtaking a large vehicle in the next lane, it deviates up to 20 cm to the other side within the lane to ensure safety.

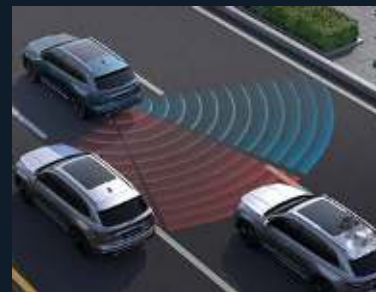
The extensive safety features also include active risk avoidance and provide for functions like:



Rear Collision Warning (RCW)



Rear Crossing Traffic Alert (RCTA)



Blind Spot Detection (BSD)



Door Open Warning (DOW)

Specifications				
Type	Smart	Comfort	Premium	Ultimate
Power Train	2.0TD+8AT			
Wheel Drive	4WD			
Max. Power	235 HP			
Max. Torque	350 N·m			
Chassis				
Front Suspension	Macpherson Strut			
Rear Suspension	Multi-link with Lateral Stabilizer Bar			
Front Brake Disc	Ventilated			
Rear Brake Disc	Plate			
Interior				
Panoramic Sunroof	•	•	•	•
6 Airbags	•	•	•	•
Multi-media				
8-Speaker	•	•	-	-
10-Speaker	-	-	•	•
Active Noise Canceling	-	-	•	•
12.3-inch CSD	•	•	•	•
Convenience				
Phone Wireless Charging	-	•	•	•
AR-HUD	-	-	•	•
3 Zone Auto AC	-	-	•	•
CN95 AC Filter	•	•	•	•
Advanced Driver Assistance Systems				
Adaptive Cruise Control	-	•	•	•
Lane Change Assist (LCA)	-	-	•	•
Blind Side Detection (BSD)	-	-	•	•
Rear Collision Warning (RCW)	-	-	•	•
Highway Assist Base (HWA Base)	-	•	•	•

- The above values are results from internal testing and are subject to change after validation.
- Some of the equipment illustrated or described in this catalog may not be supplied as standard equipment and may be available at extra cost.
- Geely Motor Company reserves the right to change specifications and equipment without prior notice.
- The color plates shown may vary slightly from the actual colors due to the limitations of the printing process.
- Please consult your dealer for full information and availability on colors and trims.



