



MONJARO



سكايلاين للسيارات
SKYLINE AUTOMOTIVE

A CLASS
OF ITS OWN
THE NEW MONJARO

Introducing the new

MONJARO

A CLASS OF ITS OWN

The New Monjaro is a masterpiece of design, performance, and precision. Crafted to deliver incomparable excellence, it brings together a bold premium design, cutting-edge technology, and an elevated driving experience.

Every detail reflects thoughtful craftsmanship and a polished sense of excellence, offering you a vehicle that's as sophisticated as it is powerful.



DESIGN WITH PRESENCE AND PRECISION

The New Monjaro makes an instant impression with its bold silhouette and detailing. From its powerful stance and dynamic proportions to the crisp character lines that define its body, every angle speaks of confidence. The **Matrix LED taillights** add a futuristic touch, while the **20-inch multi-spoke wheels** ground the design in sporty elegance.



20" Multi-Spoke Wheels



Matrix LED Taillights



Energy Strings" Vertical Grill



"Energy Matrix" Headlights



The image shows the front interior of a car, likely a luxury SUV. The dashboard is wide and features two large digital screens. The left screen displays vehicle information like speed (0 km/h) and fuel level. The right screen shows a home screen with various app icons. The steering wheel is black with orange leather accents. The center console has a gear shifter and handbrake. The seats are upholstered in orange leather with a quilted pattern. The car is parked in a desert landscape with mountains in the background.

A SANCTUARY OF STYLE AND SERENITY

Step inside the New Monjaro and experience a world crafted around your comfort. The cabin blends tasteful aesthetics with indulgent features: driver seat with massage, 8-way adjustable and ventilation, co-pilot seat control with one-touch lying-flat function, and rear reclining seats with generous legroom. The boss control panel gives rear passengers command over key settings, while the updated center console adds a touch of modern luxury. With 72-color ambient lighting, 3-zone climate control, and a high-definition HUD paired with a multi-screen layout, every detail is designed to create an atmosphere of calm, comfort, and control.



ONE-BUTTON LIE FLAT SEAT



DRIVER MASSAGE SYSTEM



UPDATED CENTER CONSOLE



3-ZONE CLIMATE CONTROL



BOSS BUTTON FOR THE PASSENGER



ELECTRIC ADJUSTMENT OF REAR ROW



VENTILATED SEATS



3 SCREEN CENTRAL CONTROL



ADAPTIVE CCD SUSPENSION

Smooth out every road with intelligent damping that adjusts in real time for peak comfort and stability. A feature typically reserved for luxury SUVs, this advanced suspension gives the New Monjaro a ride quality that goes beyond its class.



PRECISION IN MOTION

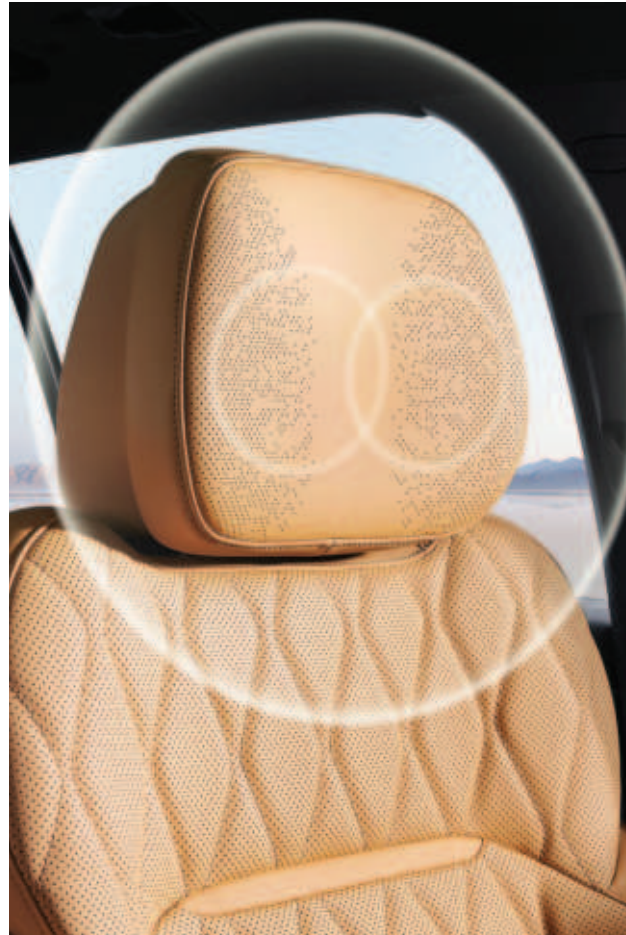
Every detail of the New Monjaro's performance is engineered for control and comfort. Its 2.0TD engine delivers 235 horsepower and 350 Nm of torque, paired with an 8-speed Aisin transmission for smooth, responsive shifting. The BorgWarner intelligent 4WD system adapts seamlessly to road conditions, while CCD adaptive suspension absorbs uneven surfaces to elevate ride quality. Multiple drive modes let you tailor the experience, whether you're navigating busy streets or open highways or gliding over the sand.

SMARTLY CONNECTED, SEAMLESSLY YOURS.

The New Monjaro keeps you effortlessly in touch with your world. Its 12.3-inch triple display offers clear, responsive control across navigation, media, and vehicle settings. Enjoy wireless Apple CarPlay for easy smartphone integration, while the 12-speaker Infinity™ audio system with headrest speakers surrounds you in immersive sound. Four-zone voice control lets every passenger interact with the system independently, adding convenience and personalization.



12-SPEAKER INFINITY SYSTEM



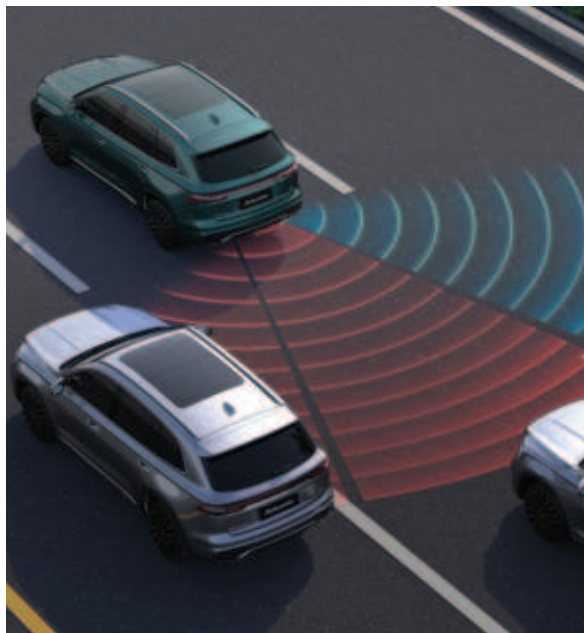
HEADREST AUDIO





CONFIDENCE IN EVERY DRIVE

The New Monjaro is built to protect. Its 540° full-view camera system gives you complete visibility when parking or maneuvering, while the advanced ADAS suite offers smart features like Lane Keep Assist, Adaptive Cruise Control, Automatic Emergency Braking, and Blind Spot Detection to support you at every turn. With a structure composed of 79% high-strength steel, safety is engineered into



BSD | BLIND SPOT DETECTION



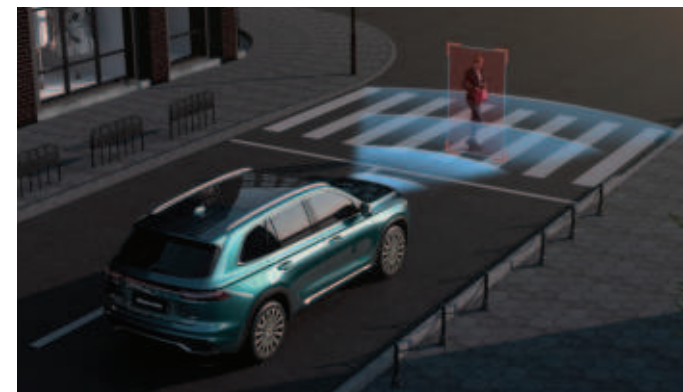
RCTA | REAR CROSS-TRAFFIC ALERT



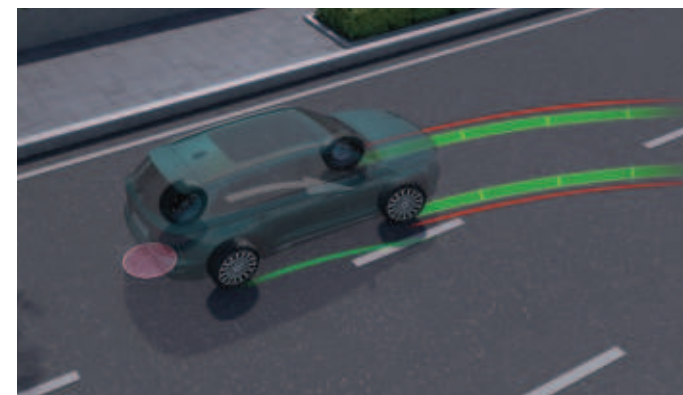
HUD | HEAD-UP DISPLAY



ACC | ADAPTIVE CRUISE CONTROL



AEB | AUTOMATIC EMERGENCY BRAKING

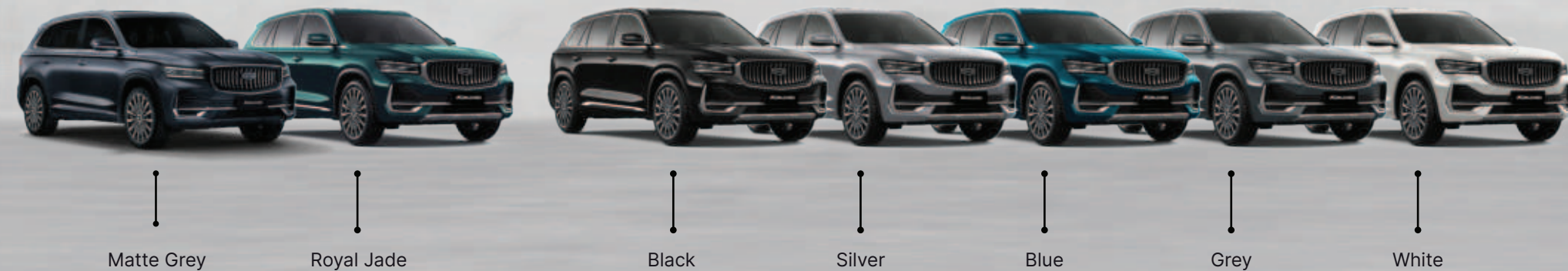


540° FULL-VIEW CAMERA SYSTEM



TAILOR YOUR NEW MONJARO

Express your style with a curated selection of elegant exterior colors and refined interior trims. Whether you prefer a bold statement or subtle sophistication, the New Monjaro offers combinations that reflect your individuality. Explore the full palette and trim options to make it truly yours.



SPECIFICATIONS

Trims	GK	GF
Dimension	4770*1895*1689, Wheelbase 2845	
Minimum Ground Clearance (mm)	210 mm	
Fuel Tank Capacity (L)	62 L	
Trunk Volume (L)	562 L	
Performance		
Engine	2.0TD	
Transmission	8AT	
Max. Power (kW/rpm)	175 kw	
Max. Horsepower (hp/rpm)	238 hp	
Max. Torque (N•m/rpm)	350 nm	
Drive Type	4WD	
0-100 km/h Acceleration (s)	8.4 s	
Driving Mode	Intelligence/ECO/Comfort/Sport/Snow/Off-Road/Sand	
Exteriors		
LED Headlight	●	●
Automatic Approach&Departure Lighting	●	●
LED Daytime Running Lights	●	●
Active High Beam Control	●	●
Panoramic Power Sunroof with Power Sunshade	●	●
Power-adjustable Wing Mirrors	●	●
Power-folding Wing Mirrors	●	●
Roof rail	●	●
Programmable Power Tailgate	●	●
Sense Open Trunk	●	●
Wheel Rims	225/55 R19	235/45 R20
Interiors		
Ambient light, Color adjustable	●	●
Microfiber Vinyl Multifunctional Steering Wheel	●	●
4-Way Manual Adjustment Steering Wheel	●	●
Rear View Mirror Auto Dimming	●	●
Metal thread plate	●	●
Driver Seat Adjustable	Electric 8-Way Adjustable	Electric 8-Way Adjustable
Front Passenger Seat Adjustable	Electric 4-Way Adjustable	Electric 4-Way Adjustable
Driver Seat Massage	●	●
Driver Seat 4-Way Power Lumbar Support	●	●
Driver Seat Ventilation	●	●
Co-driver Seat Ventilation	-	●
Co-driver Seat Adjustable by Rear	-	●
Front Seats Memory	●	●
Rear Row Seats Fold Flat	●	●
Rear Row Seats Middle Headrest	●	●
Front Seats Sunvisor	●	●
Front Seats Make-up mirror with light	●	●

Trims	GK	GF
Infotainment		
12.3" TFT DIM	●	●
12.3" Co-driver Screen	●	●
12.3" CSD	●	●
Head-up Display	—	●
4-Zone Voice Control	●	●
Wireless Charging	●	●
8 Speakers	●	—
12 Speakers	—	●
Infinity™ Brand Speakers	—	●
Headrest Speaker	—	●
Geely ONE OS	●	●
Bluetooth	●	●
Phone Mirorr Link	●	●
Wireless Apple Carplay	●	●
ADAS		
Adaptive Cruise Control (ACC)	●	●
Automatic Emergency Braking (AEB)	●	●
Lane Departure Warning (LDW)	●	●
Lane Keeping Assist (LKA)	●	●
Highway Assist (HWA)	●	●
Lanes Changing Assistant (LCA)	—	●
Door Open Warning (DOW)	—	●
Blind Side Detection (BSD)	—	●
Rear Cross Traffic Alert (RCTA)	—	●
Rear Collision Warning (RCW)	—	●
Traffic Sign Information (TSI)	●	●
SAFETY		
TCS/ABS/EBD/BA	●	●
BOSCH Electronic Stability Control System	●	●
540 Degree View Camera	●	●
Front/Rear Radar	●	●
Anti Rolling Program (ARP)	●	●
Hill Start Assist Control (HAC)	●	●
Hill Descent Control (HDC)	●	●
Tire Pressure Monitoring System (TPMS)	●	●
Airbags	6	6
COMFORT & CONVENIENCE		
Keyless Entry & Start	●	●
Remote Windows/Sunroof Operation	●	●
3-Zone Auto Climate	●	●
Rear A/C Vent	●	●
Front Row Climate Control Board	●	●
Air Quality Control System	—	●
Intelligent Auto Air Refresh	●	●
CN95 High-efficiency Anti-virus Cabin Air Filter	●	●

● Standard — Not Available



2845



1895





سكايلاين للسيارات
SKYLINE AUTOMOTIVE

☎ 800 7117



geely.com.qa

 
@geelyautoqatar